

Lab name: SRI Instruments
 Client: SRI Final test
 Client ID: N11792
 Analysis date: 08/07/2020 14:58:24
 Method: Heated Inj 200C SRI liner
 Description: FID 300C
 Column: 30MXT502 1 micron
 Carrier: H2 from BIHG
 Integration: Peak sens=95.0 Base sens=10.0 Min area= 10.00 Standard= 4.000 Sample=100.000 Tangents=off
 Data file: 333calMXT682.CHR ()
 Sample: 7 Cannabinoids

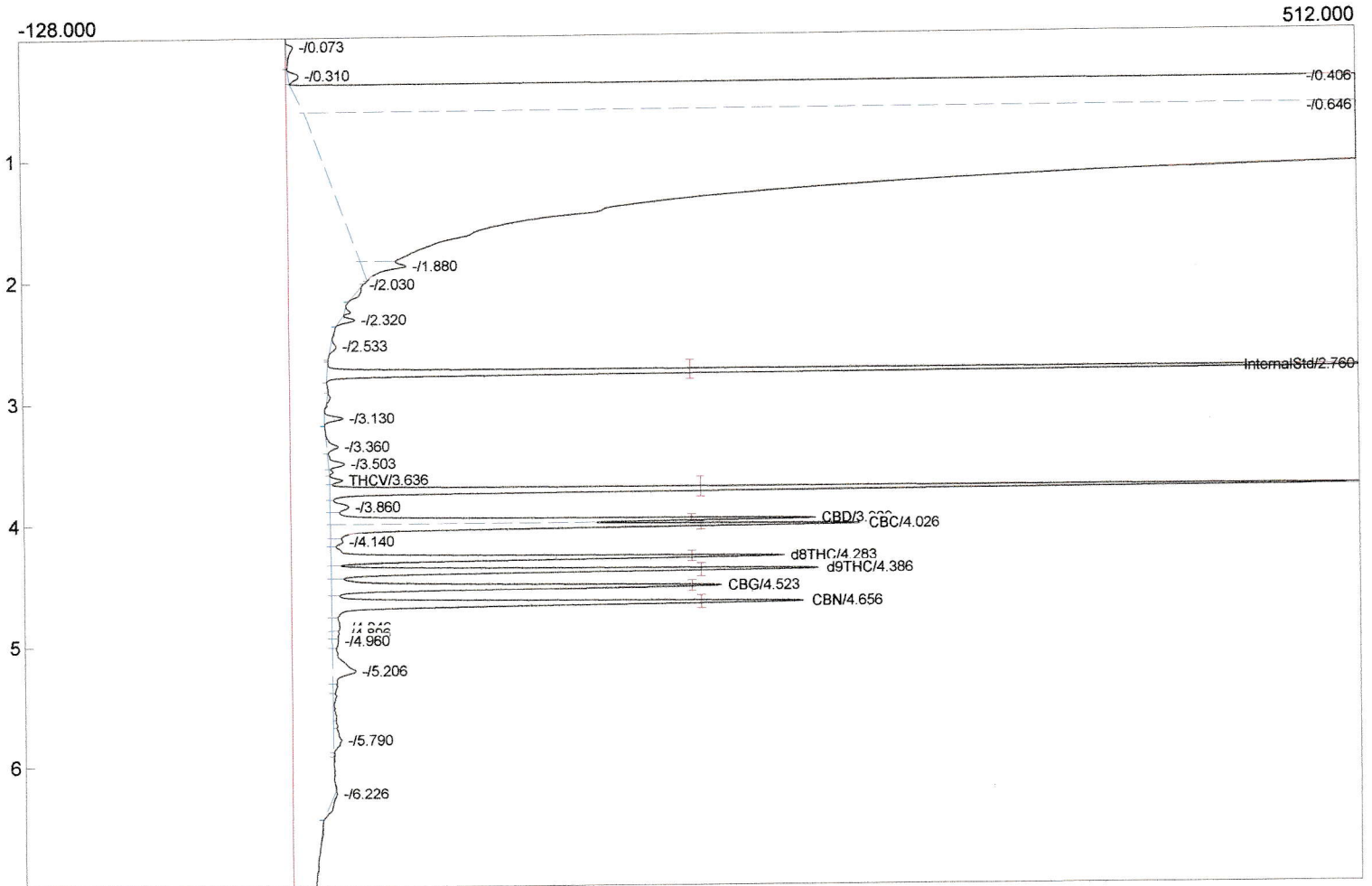
Temperature program:

Init temp	Hold	Ramp	Final temp
190.00	0.000	30.000	290.00
290.00	3.000	0.000	290.00
140.00	0.000	30.000	190.00

Events:

Time	Event
0.000	ZERO
0.000	SOUND
2.000	INTEG IMMEDIATE
3.600	INTEG IMMEDIATE
11.000	INTEG IMMEDIATE
14.000	INTEG IMMEDIATE

7 CANNABINOIDS
30MXT502 COLUMN



Component	Retention	Area	Internal	Units
InternalStd	2.760	1120.9597	100.0000	
THCV	3.636	1030.6036	10.7846	%
CBD	3.980	517.2111	5.3323	%
CBC	4.026	594.5206	6.1293	%
d8THC	4.283	534.2846	5.5910	%
d9THC	4.386	580.5830	6.0754	%
CBG	4.523	508.3669	5.3197	%
CBN	4.656	623.2512	6.1550	%
		5509.7807	145.3873	

Lab name: SRI Instruments
 Client: SRI Final test
 Client ID: N11792
 Analysis date: 08/07/2020 14:58:24
 Method: Heated Inj 200C SRI liner
 Description: FID 300C
 Column: 30MXT502 1 micron
 Carrier: H2 from BIHG
 Integration: Peak sens=95.0 Base sens=10.0 Min area= 10.00 Standard= 4.000 Sample=100.000 Tangents=off
 Data file: 333calMXT682.CHR ()
 Sample: 7 Cannabinoids

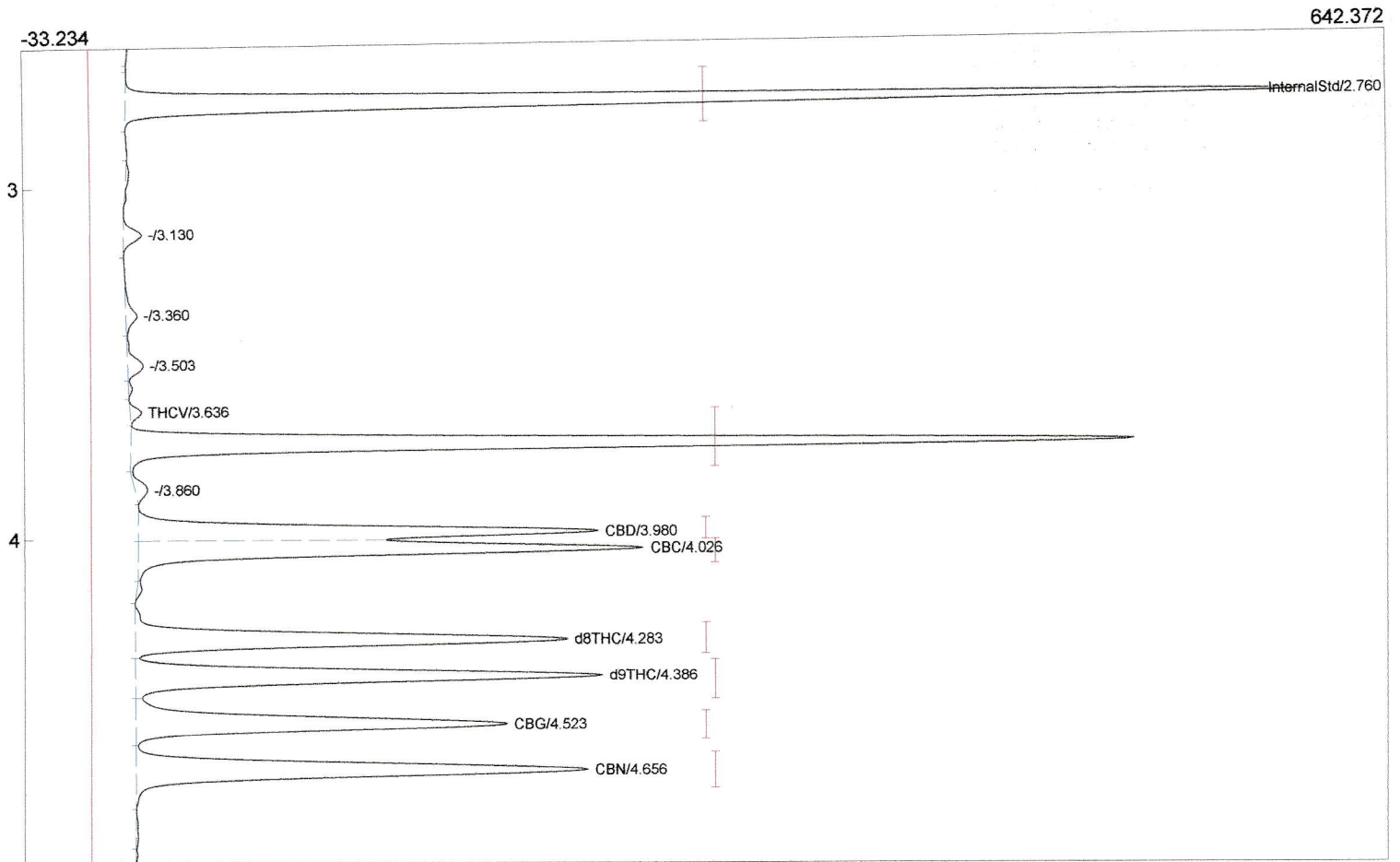
Temperature program:

Init temp	Hold	Ramp	Final temp
190.00	0.000	30.000	290.00
290.00	3.000	0.000	290.00
140.00	0.000	30.000	190.00

Events:

Time	Event
0.000	ZERO
0.000	SOUND
2.000	INTEG IMMEDIATE
3.600	INTEG IMMEDIATE
11.000	INTEG IMMEDIATE
14.000	INTEG IMMEDIATE

SAME CHROMATOGRAM
 ZOOM IN



Component	Retention	Area	Internal	Units
InternalStd	2.760	1120.9597	100.0000	
THCV	3.636	1021.4500	10.6888	%
CBD	3.980	490.1884	5.0537	%
CBC	4.026	566.2360	5.8377	%
d8THC	4.283	510.4133	5.3412	%
d9THC	4.386	562.7330	5.8887	%
CBG	4.523	486.1900	5.0877	%
CBN	4.656	592.9518	5.8557	%
		5351.1222	143.7534	